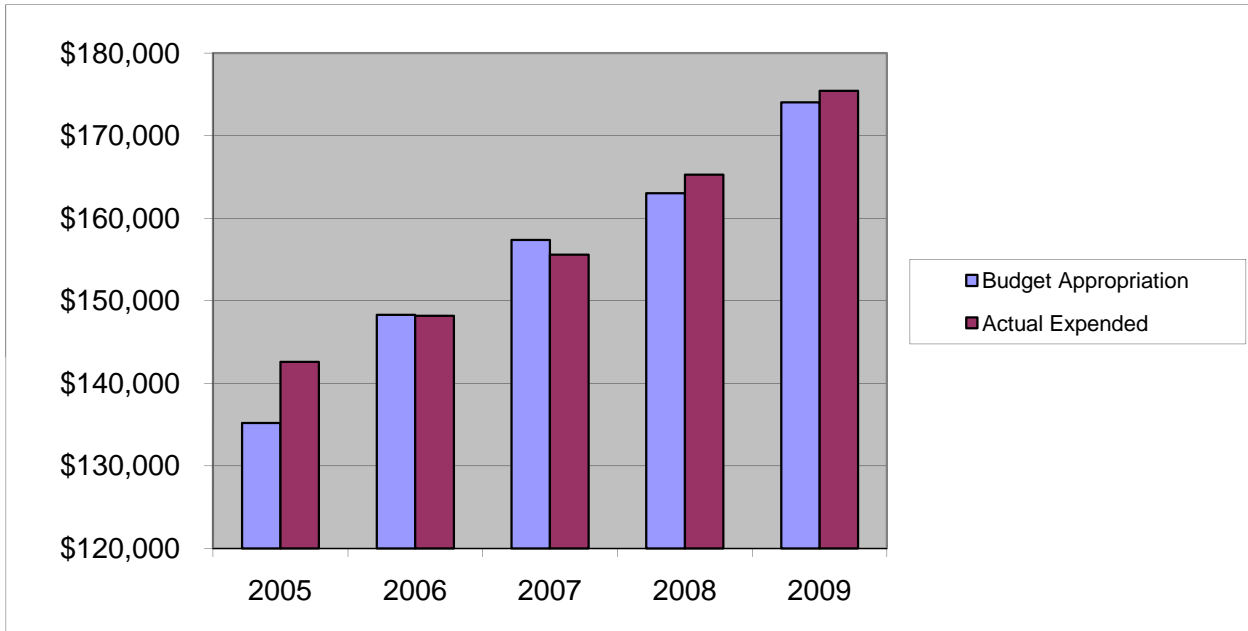


CLERK OF THE BOARD

Salaries & Wages

	2005	2006	2007	2008	2009
Budget Appropriation	\$ 135,174.00	\$ 148,301.00	\$ 157,346.00	\$ 163,007.00	\$ 174,035.00
Actual Expended	\$ 142,576.00	\$ 148,171.72	\$ 155,581.07	\$ 165,271.46	\$ 175,436.51
Difference (App. - Exp.)	\$ (7,402.00)	\$ 129.28	\$ 1,764.93	\$ (2,264.46)	\$ (1,401.51)
% Expended	105.5%	99.9%	98.9%	101.4%	100.8%
Total Budget Approp.	\$ 92,061,376	\$ 98,126,692	\$ 102,912,559	\$ 107,848,203	\$ 107,667,916
% of Total Budget Approp.	0.15%	0.15%	0.15%	0.15%	0.16%
Five Year Average (Mean) Budget Appropriation:					\$ 155,572.60
Five Year Average (Mean) Budget Expended:					\$ 157,407.35
Difference:					\$ (1,834.75)



2010 BUDGET APPROPRIATION:	\$ 190,581
2009 Budget Appropriation	\$ 174,035
\$ Change	\$ 16,546
% Change:	9.5%

2010 Budget Appropriation	\$ 190,581
2005 Budget Appropriation	\$ 135,174
\$ Change	\$ 55,407
% Change	41.0%