

## **Sparta Mountain WMA Forest Stewardship Year 1 (2018) Activities**

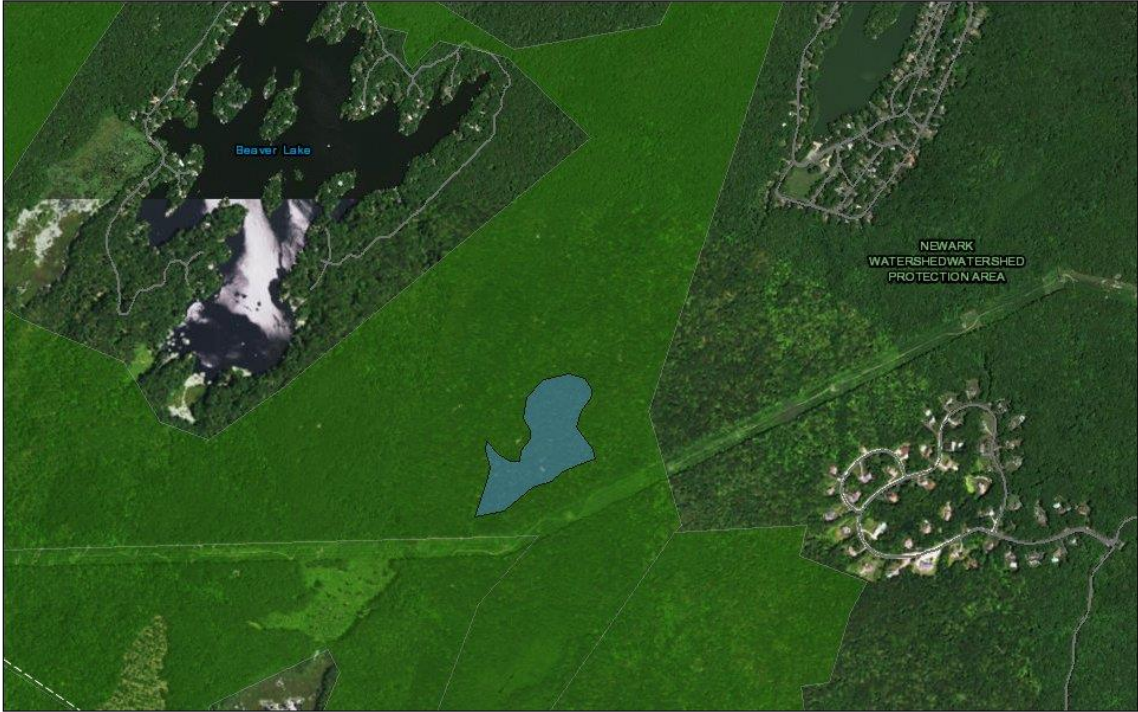
### **Stand 18 – Young Forest Restoration**

Prescription: Variable retention forest management using a combination of shelterwood and seed tree with wildlife reserves is prescribed in Year 1 of the Sparta Mountain WMA Forest Stewardship Plan for 18.5 acres in Stand 18 (see pages 50-52 and 65-67 in the plan). Chainsaws and/or heavy machinery will be used to mechanically fell trees. The average Basal Area (BA) retained in the site will be about 30 sq. feet per acre overall but with patches ranging between 10 and 50 sq. feet per acre. Patches with a residual BA of 10 will not exceed 10 acres in size. Trees to be retained will be the larger, most vigorous co-dominant stems of species that are predominant components of the oak-hickory overstory type (skewed towards retaining a diversity of oak species where possible), while selecting against suppressed and intermediate stems of all species as well as co-dominant stems that are less desirable species for wildlife - or are less desirable due to their increasing abundance within the NJ forest understory (e.g. red maple, black birch, etc.). Crowns and some trees will be left on the ground for wildlife cover and other trees may be removed and sold by the contractor. Cavity trees will be retained when possible. Primary access will be the existing powerline access roads originating from Edison Road to the south. Tree felling will be conducted prior to April 1, 2018 but may resume after November 15, 2018. Herbicide treatment for invasive plants is not needed.

Purpose: The management objective is to restore young oak-hickory forest within a more mature forested landscape by opening the canopy to allow for the growth of young oak and hickory trees, blackberries, sedges, and a variety of other shrubs and sapling species. This restoration will provide breeding and/or foraging habitat for over 60 different bird species, including the endangered golden-winged warbler.

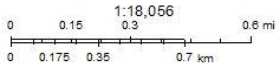
The practice plan for this activity will be available soon.

Sparta Mountain WMA Forest Stewardship Year 1 Activities: Stand 18 - Young Forest Restoration



1/29/2018, 11:21:18 AM

- Stand 18 - 2018 Young Forest
- State Open Space
- Transportation - Roads



Esri, HERE, DeLorme, MapmyIndia, © OpenStreetMap contributors, and the GIS user community

Web AppBuilder for ArcGIS