



DEPARTMENT OF ENGINEERING AND PLANNING  
 Division of Engineering  
 One Spring Street  
 Newton, New Jersey 07860  
 973-579-0430  
[dpw@sussex.nj.us](mailto:dpw@sussex.nj.us)  
 Matthew R. Sinke, P.E.  
 Division Director/Assistant County Engineer

**Project Completion Notice – Repair of Bridge D-17**

**Distributed: December 4, 2020**

**Project:**

**Bridge D-17 Downstream Headwall & Guide Rail Repairs**  
 Linn Smith Road, Frankford Twp.

**Construction Forces:**

- Sussex County Office of Bridge & Traffic Safety
- Sussex County Division of Public Works

**Schedule:**

- Single lane, signal-controlled work zone established on Monday, October 5, 2020
- Headwall and wingwall repairs completed on Tuesday, November 3, 2020
- Single lane, signal-controlled work zone removed on Thursday, November 5, 2020
- Guide rail installation completed on Monday, November 23, 2020

**Construction Activities:**

- ✓ Install portable traffic signals and temporary traffic control devices for signal controlled work zone - *Complete*
- ✓ Remove/demo damaged guide rail and bridge components - *Complete*
- ✓ Repair damaged wingwall and headwall - *Complete*
- ✓ Replace guide rail system along downstream side of Bridge D-17 (Linn Smith Rd. N/WB shoulder) - *Complete*

**Traffic Control:**

- As of Monday, November 23, 2020, all traffic control devices have been removed from Linn Smith Road in the vicinity of Bridge D-17

**Contact Information:**

For more information about this project please feel free to contact Joshua Roe, Assistant Engineer, of the Sussex County Division of Engineering at 973-579-0430 or [dpw@sussex.nj.us](mailto:dpw@sussex.nj.us)



Bridge D-17 – Downstream (North/Westbound) Headwall and Guide Rail After MVA



Bridge D-17 – Downstream (North/Westbound) Headwall and Guide Rail After Repairs (Looking East)



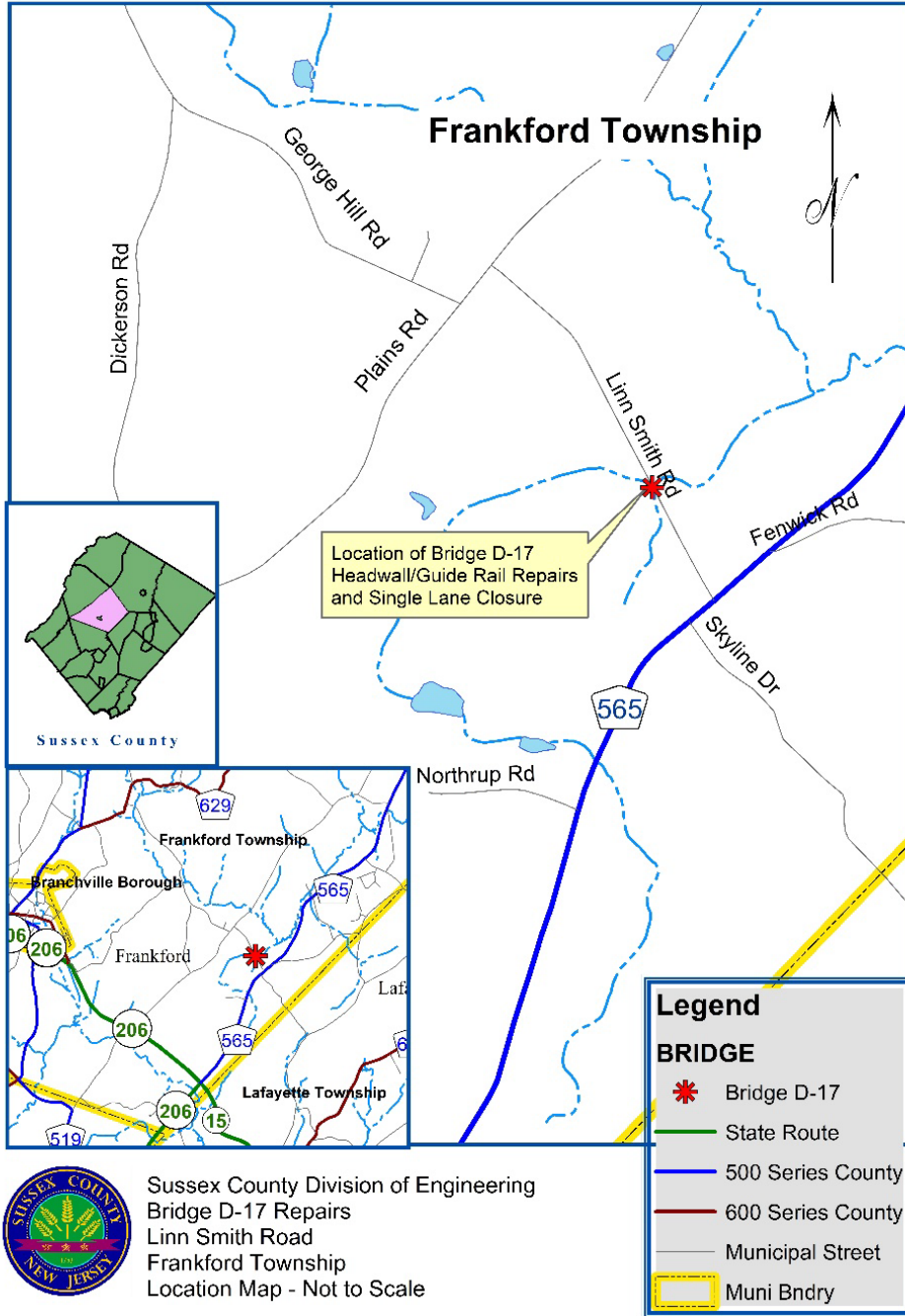
View of Bridge D-17 After Downstream Headwall and Guide Rail Repairs (Looking West)



DEPARTMENT OF ENGINEERING AND PLANNING  
 Division of Engineering  
 One Spring Street  
 Newton, New Jersey 07860  
 973-579-0430  
[dpw@sussex.nj.us](mailto:dpw@sussex.nj.us)  
 Matthew R. Sinke, P.E.  
 Division Director/Assistant County Engineer

**Project Completion Notice – Repair of Bridge D-17** **Distributed: December 4, 2020**

**Bridge D-17, Linn Smith Rd., Frankford Township: Location Map**



Sussex County Division of Engineering  
 Bridge D-17 Repairs  
 Linn Smith Road  
 Frankford Township  
 Location Map - Not to Scale

N:\04 Asset\02 Bridge\D\_FRANKFORD\D-17\CORR\Public Notice\20200928\_PBL NTC\_D-17\_H.W. & G.R. Repairs.docx